

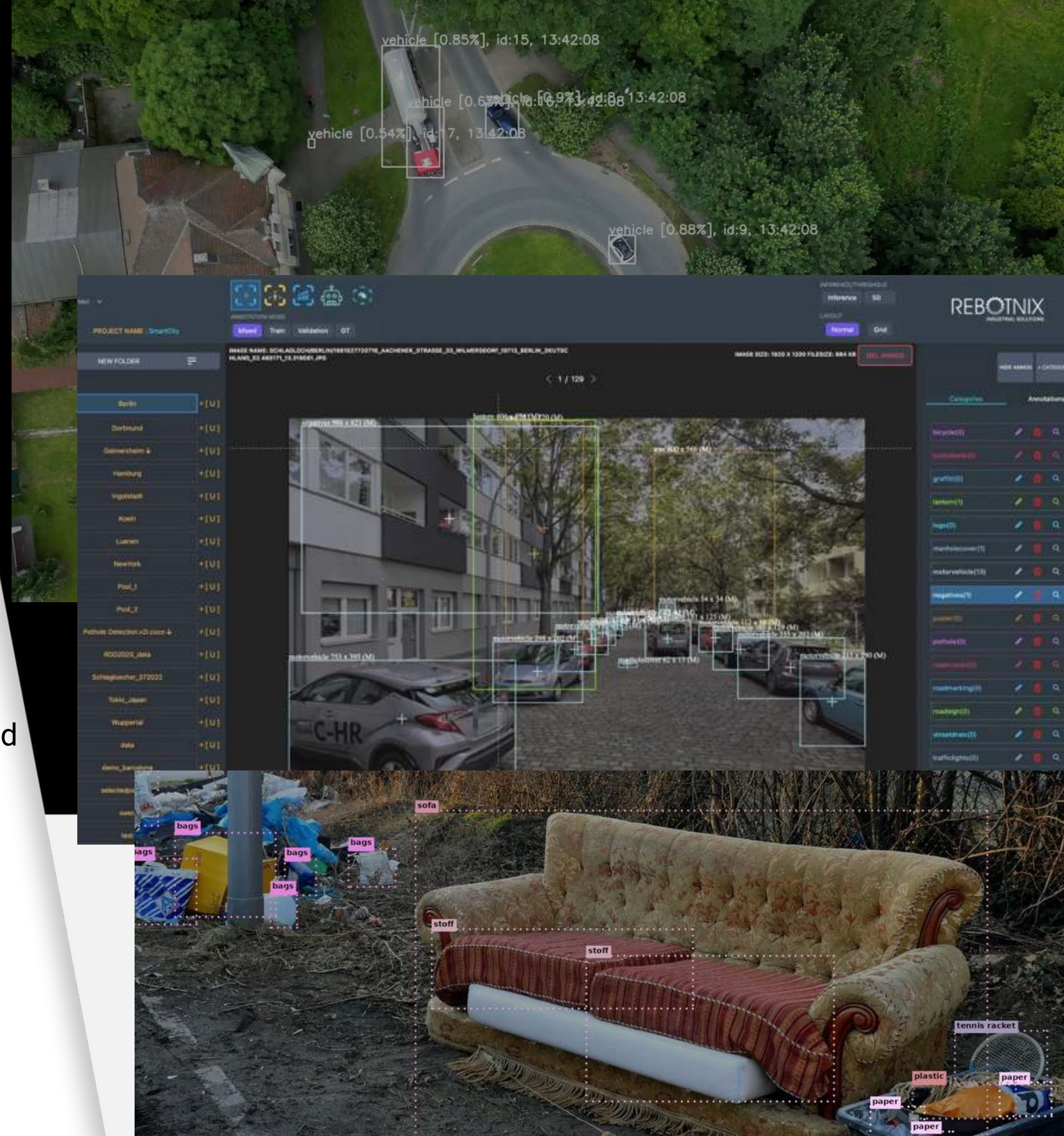
A satellite map of Europe and surrounding regions, including parts of North Africa, the Middle East, and Iceland. The map shows green landmasses, blue oceans, and white mountain ranges like the Alps and Pyrenees. The text "WELCOME TO REBOTNIX HORIZON" is overlaid in the center.

WELCOME TO **REBOTNIX HORIZON**

The challenge of running a city on a daily basis

Many problems only become apparent late in the day during daily operations, thereby creating avoidable work.

- Problems become apparent too late
- Inspection trips cost time and personnel
- Data is scattered across many systems
- Maintenance is done based on gut feeling rather than actual need
- Lack of transparency generates unnecessary costs



What is REBOTNIX Horizon?

Horizon automatically detects problems in daily operations and provides the city with immediately actionable information.

- A platform for automatic daily traffic recording
- Clear detection of trash, signs, construction sites, and hazards
- Results instead of raw data
- Patterns and repetitions become visible
- Decisions are based on real data
- Risks are anticipated, processes are managed more effectively



How does Horzion work?

Horizon platform processes real-time data directly on site and automatically detects events before they are transferred to the platform.

- Edge systems analyze image and sensor data in the vehicle
- Only relevant results are sent to Horizon
- Multiple units work together to cover entire routes
- No dependence on external platforms
- Stable operation even with weak network coverage
- Horizon processes data locally and operates without storing personal data in line with GDPR.

GUSTAV MINI SUPPORTS A WIDE RANGE OF GMSL CAMERAS



StereoLabs*

D3 Embedded

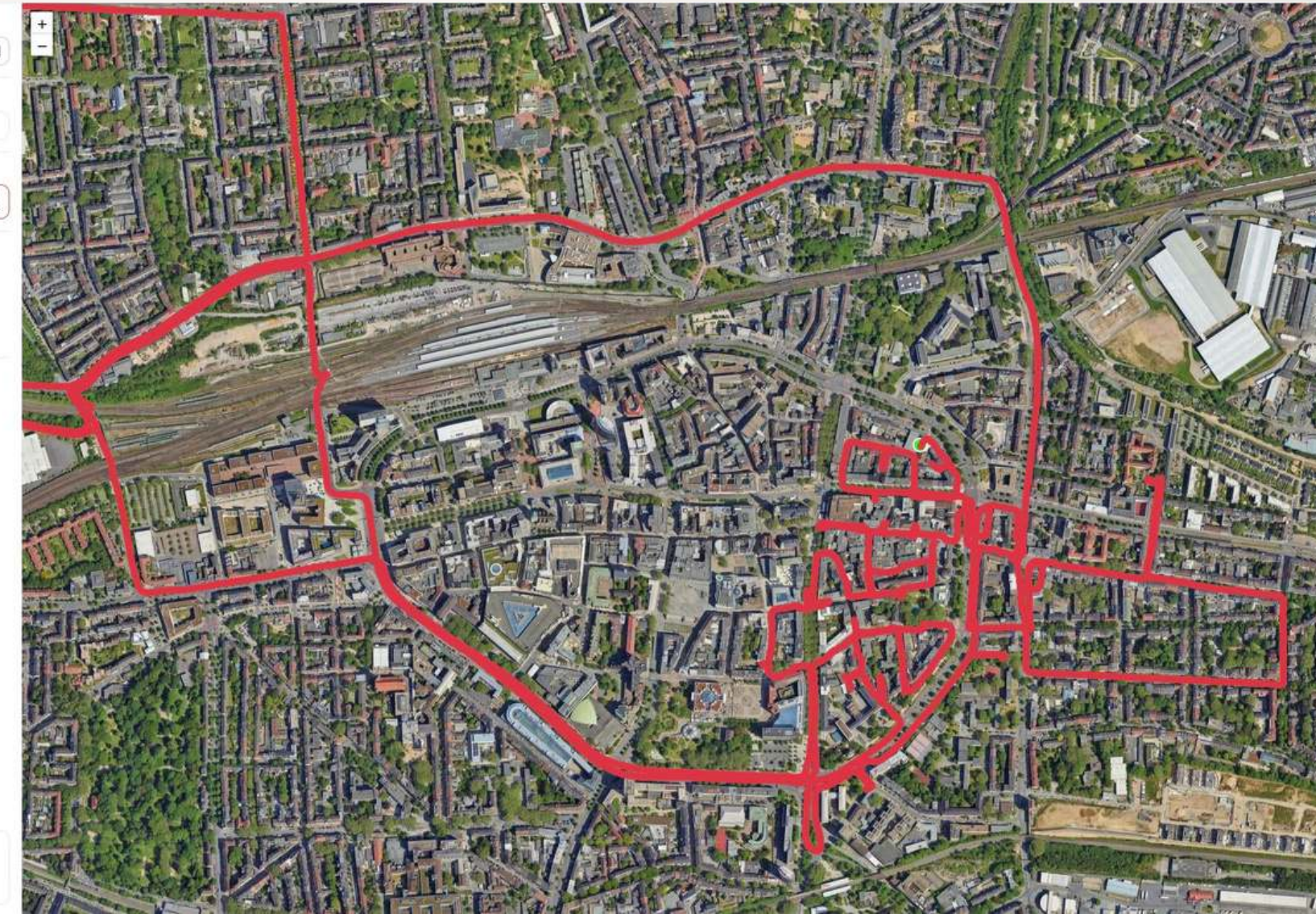
TIER IV

Select Date
Select Date
17.11.2025

Date Selection
Single Range

Data Type
REP IMG ✓ GPS POS

Statistics
Total Points
8.412
Latest Update
17.11.2025, 07:31:21



Available Data
17
days

What Horizon Technology does

- Edge systems detect problems immediately in ongoing traffic
- The data is processed directly on site
- Only relevant results passed on
- The connection via Wi-Fi, 5G, and satellite ensures stable transmissions
- The business remains independent and controllable
- Installation takes a maximum of 30 minutes in the vehicle
- Export data to ESRI , ArcGIS Pro, GRASS GIS and QGIS

Features



RTK | PPK

With RTK GPS and optional correction data from a second GPS system, the solution provides centimeter-accurate positioning for applications that require maximum precision and reliability.



Models we offer and are constantly developing further

We develop models that detect illegal waste dumping, dirty or obscured traffic signs, graffiti and construction site counts. These models are continuously improved to give cities clear and reliable insights for daily operations.



Illegal waste



Traffic sign condition



Graffiti detection



Construction site count

Notice

All models were built from scratch and are fully owned by Rebotnix including the training data, the model architecture and the ongoing data maintenance. We also aim for these models to eventually not only provide insights but to support and prepare decisions for cities.

Certifications

Our products are regularly tested by independent laboratories according to Industry Class A standards and retested every 24 months. We meet the requirements for CE, electromagnetic compatibility, CISPR, and protection classes IP53 to IP69K.



Since August 1, 2024, we have been working in accordance with the ISO standard for the processing of AI systems in line with the European AI Act. We contribute to this through published works and open source initiatives. We have been a recognized integration partner of NVIDIA since 2018.

Since 2025 our data centers have been certified to ISO 9001 and 27001.

References

REBOTNIX solutions are deployed in over 30 cities across Germany and Europe.



Management



CEO, GARY HILGEMANN

Gary Hilgemann is an engineer focused on cost efficient AI solutions. As a cofounder and managing director of Rebotnix and a regular keynote speaker, he supports innovative projects around the world.



CTO, PETER SIMON

Peter Simon, co-founder and CTO of REBOTNIX GmbH in Lünen, began his career as an industrial electronics technician in the service department of a combined heat and power plant.

Today, Peter heads up hardware production at REBOTNIX.



Contact

We offer comprehensive support and customer service with fast response times and reliable maintenance and repair contracts. Our goal is to ensure that your operations run smoothly.

Address

REBOTNIX GmbH
Am Brambusch 22
44536 Lünen
Germany

Phone: +49 231/98222561

E-Mail: communicate@rebontix.com

Website: <https://rebotnix.com>

DISCLAIMER

THE CONTENT PROVIDED IN THIS PRESENTATION IS FOR GENERAL INFORMATIONAL PURPOSES ONLY. WHILE REBOTNIX GMBH MAKES EVERY EFFORT TO ENSURE THE ACCURACY COMPLETENESS AND TIMELINESS OF THE INFORMATION WE MAKE NO GUARANTEES OR WARRANTIES OF ANY KIND EXPRESS OR IMPLIED ABOUT THE RELIABILITY SUITABILITY OR AVAILABILITY OF THE INFORMATION PRODUCTS SERVICES OR RELATED GRAPHICS CONTAINED IN THIS PRESENTATION FOR ANY PURPOSE. ANY RELIANCE YOU PLACE ON SUCH INFORMATION IS AT YOUR OWN RISK.

EXTERNAL LINKS

THIS DOCUMENT MAY CONTAIN LINKS TO THIRD PARTY WEBSITES. REBOTNIX GMBH HAS NO CONTROL OVER THE CONTENT OR AVAILABILITY OF THOSE SITES AND ASSUMES NO RESPONSIBILITY FOR THEM. THE INCLUSION OF ANY LINKS DOES NOT IMPLY A RECOMMENDATION OR AN ENDORSEMENT OF THE VIEWS EXPRESSED ON THOSE SITES.

COPYRIGHT

ALL CONTENT AND MATERIALS IN THIS DOCUMENT ARE THE INTELLECTUAL PROPERTY OF REBOTNIX GMBH UNLESS OTHERWISE STATED AND ARE PROTECTED UNDER APPLICABLE COPYRIGHT LAWS. UNAUTHORIZED USE REPRODUCTION OR DISTRIBUTION IS PROHIBITED.

NO LEGAL OR PROFESSIONAL ADVICE

NOTHING IN THIS DOCUMENT CONSTITUTES LEGAL FINANCIAL OR PROFESSIONAL ADVICE. FOR SUCH ADVICE PLEASE CONSULT A QUALIFIED PROFESSIONAL.